



VISIT  
HALTON

HALTON HIGHLIGHTS  
*Issue 5*

# HOME MADE IN HALTON

NEW EDITION  
EXTRA  
TASTES  
NEW EDITION

CAFÉ  
CULTURE

FEEL GOOD  
FOOD

A CULINARY  
JOURNEY

RUNCORN • WIDNES • DARESURY • MOORE • HALE VILLAGE • PRESTON BROOK • SANDYMOOR



TASTY!

DIG IN

WELCOME

# GRAB A PLATE

YOUR HALTON FOODIE ADVENTURE **STARTS HERE**

Halton is serving up something special. From riverside treats to countryside eats, there’s flavour in every corner of the borough. Whether you’re craving comfort food, a bold new bite, or a sweet treat to finish the day, you’ll find it right here.

Spanning over 34 square miles, Halton sits between the cities of Chester, Liverpool and Manchester. A place where heritage, nature and community blend into something truly unique. And when it comes to food and drink, the borough punches well above its weight.

There’s a real mix on offer. Discover home-grown produce and dishes inspired by generations of family tradition, as well as new and exciting additions that bring something a little different to the table. Think artisan cafés and bakeries, dog-friendly delis, vertical farming walls, fine dining gems, and fresh ice cream straight from the dairy.

From the Mersey Estuary’s waterfront views to Halton’s thriving green spaces, it’s a place to explore with all the senses. Whether you’re picking up a picnic for

a day out in the countryside, pulling up a chair for a full three-course feast, or popping in for a takeaway with flair, Halton’s got you covered.

Local makers, chefs, growers and bakers are proudly shaping a food scene that’s full of creativity and character. There’s something here for every palate, and every kind of foodie adventure.

Whether you’re a local or just visiting, this guide is here to help you discover the best bits. From café culture to hidden gems and street food heroes, Halton is ready to be tasted.

**This new edition of the guide will hopefully tease your taste buds before you visit. So take a bite, dig in and enjoy everything the borough has to offer, one delicious stop at a time.**



HOT HOT HOT

TASTE HALTON

GRAB LIFE BY THE FORK

SATISFY YER' CRAVINGS

# CONTENTS

## CAFÉ CULTURE ..... 04

Find out what's brewing and discover some of the independent cafés in Halton. Read our hints and tips on where to find both the café and the culture in the borough.

## FEEL GOOD FOOD ..... 16

There are lots of good mood foods to find in Halton, from the sustainable field to fork, supper clubs and artisan ice creams. Get the scoop on where to go for that feel good food fix.

## HANDMADE IN HALTON ..... 24

Discover the local legends turning tasty ideas into their very own hand crafted delights.

## A CULINARY JOURNEY ..... 26

With its waterways and links to the ports, Halton has an affinity with foods from afar that have made the journey to the borough. Discover how history has made an impact on Halton's food scene.

## HALTON HAPPENINGS ..... 40

Find out about the latest goings on in Halton, to get the perfect pairing for your latest foodie expedition!

DELISH

YUM!



# CAFÉ CULTURE

The café scene in Halton is becoming as bold as their blends. Whether you're just after a much-needed caffeine hit, or looking for a spot to catch up, we've got the guide to find the finest grinds.

From authentic Italian coffee shipped direct from Tuscany to a classic British brew, everyone's tastes are catered for and can be found somewhere in this borough. Whether it is independent coffee shops in the heart of the community, to cafés within unique spaces found in some of the area's cultural hot spots, you will find your firm favourite. Looking for that laid back vibe, a puppuccino for your pooch or are you a lover of an indulgent cake served over a catch up, there is something for everyone.

Halton's café culture is best served alongside Halton's art and culture; it is the perfect pairing. Halton's arts and cultural menu is extensive - from enjoying live performances and gigs at small intimate venues, to the stadium shows. There is also a legendary guitar shop in Runcorn, that many famous faces get their instruments from.

Looking for something more zen? Runcorn has a Buddhist temple which hosts meditation sessions, the right blend before a chai latte at one of the independent coffee shops in the town centre.

## PAIRS WELL WITH...

Looking for the perfect pairing? We've selected some of Halton's best offerings, which go hand in hand with our Café Culture picks...

**1** Home made crafted cakes and bakes go well with an afternoon of arts and crafts at Hazlehurst Studios. [hazlehurststudios.co.uk](http://hazlehurststudios.co.uk)

**2** Get your caffeine fix with some perfectly roasted blends before getting your cultural fix at The Brindley theatre. [thebrindley.org.uk](http://thebrindley.org.uk)

**3** Afternoon Tea pairs well with exploring the heritage of Halton's legendary science and music scene at Catalyst Science Discovery Centre. [catalyst.org.uk](http://catalyst.org.uk)

**DIG IN!**



**NEW!**



## PATISSERIE LANE

82 Pit Ln, Widnes WA8 9HW

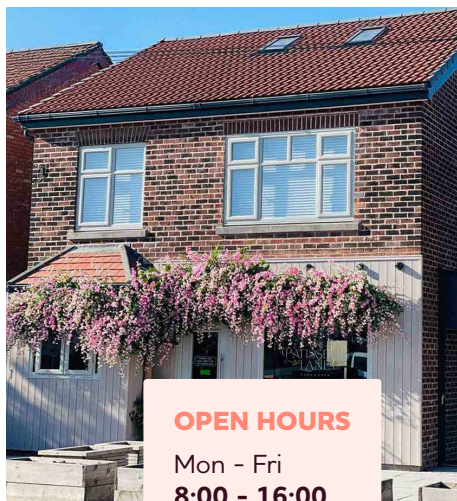
This independent café is a welcome addition to the village of Farnworth in Widnes. It is a welcoming space for a pit stop where you can enjoy delicious coffees, iced matcha, freshly baked pastries and paninis, cakes and bakes as well as ice cream. There is lots to choose from and many a cosy corner to sit back and relax.

Whether you are catching up with friends, celebrating the little or big things with a sweet treat, or just taking a quiet moment to yourself with a good coffee, Patisserie Lane is the perfect meeting place.

On lovely sunny days there is the outdoor seating area where dogs are welcome and can get in on the action and enjoy a puppuccino.

There is a free Wi-Fi, books and games for kids and adults to enjoy. As well as an array of vegan and gluten free options on the bakes. During holidays times be sure to check out the kids meal deal offers, which keeps everyone happy.

**With so much choice, expert baristas and a friendly welcoming service, this is sure to be your new favourite place for a pit stop.**



### OPEN HOURS

Mon - Fri  
**8:00 - 16:00**

Sat - Sun  
**9:00 - 15:00**

Find out more  
[patisserielane.co.uk](http://patisserielane.co.uk)

## THE TERRACE CAFÉ

High St, Runcorn WA7 1BG

When going to The Brindley Theatre's Terrace Café, you can enjoy relaxing views of the Bridgewater Canal and watch the world go by. Whether you are meeting friends and family for a catch-up, or a bite to eat before watching a performance, you won't be disappointed.

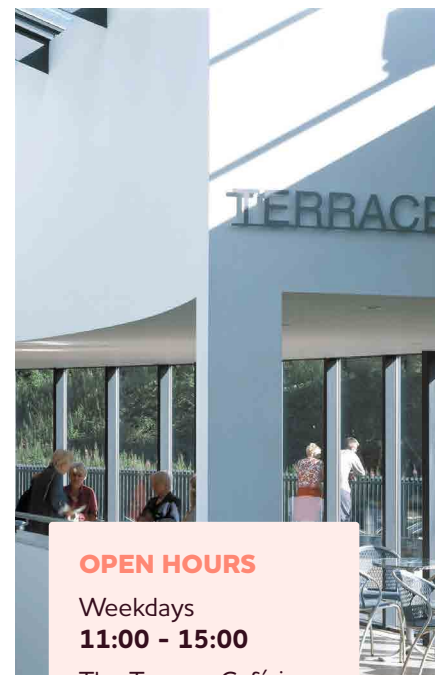
Enjoy freshly home-cooked food, as well as a choice of daily specials. There is a selection of delicious cakes and the scones are now legendary! If you like to indulge in afternoon tea, where better to enjoy it than at the Terrace Café? (Be sure to book in advance!) In the summer, there is also an outdoor seating area, a lovely spot to soak up the views and the wildlife.

### DID YOU KNOW?

The Brindley extension project is now well underway and due to complete in 2026! This will include a large café-restaurant and enhancing the Brindley Green to make it welcoming and accessible for all. Please check business hours during this period.

**IN THE MOOD FOR FOOD**

**IN THE LIMELIGHT**



### OPEN HOURS

Weekdays  
**11:00 - 15:00**

The Terrace Café is open one hour before most performances.

Find out more  
[thebrindley.org.uk](http://thebrindley.org.uk)  
**0151 907 8360**



**DELISH!**

**LUNCH & LEARN**

**DID YOU KNOW?**  
Room hire and catering for events is also available.

**TASTY!**

# CATALYST CAFÉ

Mersey Road, Widnes WA8 0DF

2025 marks the 35th anniversary of Spike Island's legendary Stone Roses concert. This man-made island is now home to the Catalyst Science Discovery Centre and Museum, which is housed in a Grade II listed building. They host interactive exhibitions and workshops, as well as being home to a lovely café, which you can enjoy without paying admission into Catalyst if you're out and about exploring Spike Island.

Serving up a tasty selection of snacks and drinks to choose from, including the "best toastie in Widnes". Grab a drink and take in the scenic views of Spike Island, the River Mersey, and the Mersey Gateway Bridge. If bringing the kids or grandkids, they will be kept entertained with the play area outside of the café.

For a special treat, book a Heritage Afternoon Tea, served in the glass-walled Observatory Gallery, with stunning views over the surrounding

area. Afternoon teas can be booked on weekdays in term time, from Tuesday to Friday and include admission to the Catalyst galleries, with all dietary requirements catered for.

## DID YOU KNOW?

On the first Sunday of each month at 13:00, Catalyst hosts a free Dementia Café, offering a place to socialise with people in similar situations, in a relaxed setting. Sessions are drop-in, so there is no need to book.



8 A Taste of Halton



## OPEN HOURS

Tues - Sun  
10:00 - 16:30

Room Hire  
and Catering  
for events also  
available!

Find out more  
[catalyst.org.uk](http://catalyst.org.uk)  
0151 420 1121

**TREAT YOURSELF**

MMMMMM!

**LEGENDARY EATS**

# THE BROOKE CAFÉ AT NORTON PRIORY

Tudor Rd, Windmill Hill, Runcorn WA7 1SX

Norton Priory Museum & Gardens is a great place to visit, with its stunning Undercroft, St Christopher Statue and artefacts on display and its beautiful walled gardens. Let's not forget The Brooke Café, which is worthy of a visit in its own right. It is now operated by Olive Tree Catering, who took over in 2025 on behalf of Norton Priory.

The menu now includes a delicious range of hot, cold and alcoholic drinks. With all day breakfast items, quiche of the week, sandwiches and hearty jacket potatoes, there is something for everybody.

You need to save room for something sweet as there is a huge selection of cakes, homemade pastries and the much talked about cheesecake of the week!

Seasonal Entrée dishes are also available for those looking for something more substantial.

Using their wealth of experience and many years operating in hospitality; Olive Tree Catering want to support the local visitor attraction by offering quality food and service, to make The Brooke Café a must visit destination.

Find out more on Instagram @thebrookecafe2025



## OPEN HOURS

Fri - Tues  
10:00 - 17:00

Weds - Thurs  
**Closed**  
(Open Thursday during School Holidays)

FANCY A  
BREW?

THAT'S  
THE  
TEA

## BREW LANE

170 Milton Rd, Widnes WA8 7JP

Nestled behind the DCBL Stadium, Brew Lane is a great addition to Widnes. This independent coffee shop is owned by Widnes-born Tom Gilmore who also plays for Widnes Vikings as scrum half.

A rugby player knows that breakfast is the most important meal of the day, and **Brew Lane is renowned for its delicious breakfasts**. Whether you prefer a veggie full brekkie, eggs benedict with smoked salmon, a full English or just a slice of toast, you'll find the portions generous and made with high-quality produce. The lunch menu is varied and includes burgers, toasties, fresh salads and more. Don't forget to check out the daily specials.

The afternoon tea is definitely worth a shout-out, you'll want your camera ready before indulging in the insta-worthy assortment. The cakes and treats on offer are hard to resist - from the soft and gooey brownies to muffins, cookies and waffles, there's so much on offer to hit that sweet spot.

The selection of hot drinks is impressive, and the coffee used in the shop can also be bought to enjoy at home - whether it is whole beans, ground or decaf.

Whether you are heading to the DCBL Stadium for a game or a catch up with friends, be sure to head to Brew Lane for your coffee fix.



DIG IN!



### OPEN HOURS

Mon - Fri  
7:00 - 15:00

Saturday  
8:00 - 13:00

Find out more on  
Facebook [Brew-Lane](#)

WELCOME

COMMUNITY  
FUELLED

## SPACE

50 Regent St, Runcorn WA7 1LJ

SPACE is so much more than just a café. It's an innovative social enterprise, which includes a multi-use event space with a coffee shop, therapy room and a purpose built wellness studio.

This is definitely the SPACE to feel zen, as well as being open to drop in for coffee, a lazy brunch or homemade cakes. There are also a range of wellbeing events, including meditation classes, craft-erhnoons and paint 'n' sip sessions.

Find out more at [spaceruncorn.co.uk](https://spaceruncorn.co.uk)

Facebook: [spaceruncorn](#)

Instagram: [@space\\_runcorn](#)

### DID YOU KNOW?

Free Depresso Club drop in runs several times a week offering free drinks and support to anyone feeling isolated and in need of a chat.

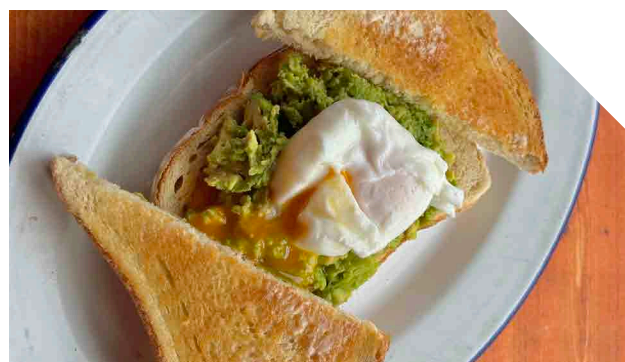


YUMMMMMMM!



### OPEN HOURS

Tues - Sun  
10:00 - 14:00



## COFFEE 500

St Michael's Industrial Estate, Widnes WA8 8TL

This independent, family-run coffee spot is found in a hidden corner of Widnes. They proudly serve Crosby Coffee's locally roasted beans, brewed fresh every day, often alongside a warm welcome from their resident pups!

Open 8:30-14:30 Mon-Sat

Find out more on Instagram @coffee500\_



## HONEY POT CAFÉ

Northwich Road, Runcorn WA7 6PE

What began as volunteering became a heartfelt journey for Gayle and Paddy, leading to the creation of the Honey Pot Café at Brookvale Community Centre. Known for its home-cooked food and warm, welcoming atmosphere, it's a place where everyone feels like family.

Open 9:30-13:30

Find out more on Facebook

HoneyPotCoffeeHouseBrookvale



## COFFEE LAB

Victoria Rd, Runcorn WA7 5SS

This Mediterranean style coffee shop is unique and colourful and has an outdoor decking area. They also have a drive thru and indoor seating. Offering a wide range of Greek pastries, desserts and multiple choices of coffee beans.

Open 7:00-15:00 Mon-Sat | 8:00-15:00 Sun

Find out more at [coffeelabruncom.co.uk](http://coffeelabruncom.co.uk)

Facebook/Instagram @coffeelab\_rn



## FM CAFFE

55 Widnes Rd, Widnes WA8 6AZ

A coffee house and bistro serving an extensive variety of lunch specials, throughout the day freshly made breakfasts and lunch to eat in or takeaway.

Open 8:30-17:00 Mon-Sat | 10:00-16:00 Sun

Find out more [fmcaffe.com](http://fmcaffe.com)

## MA&JA

21 Albert Square, Widnes WA8 6JW

The first artisan café and bakery in Widnes, serving homemade food, cakes and desserts. Always top quality food prepared by experienced chefs with a world-renowned cuisine.

Open 9:00-17:00 Mon-Sat

Find out more on Instagram @majacafe2024



# CAFÉS AT THE HEART OF THE COMMUNITY

In Halton we love our community and there are a range of community cafés waiting to be discovered by all. Get a slice of Halton and enjoy freshly homemade produce and drinks in a warm, welcoming space supporting the Halton Community.

FANCY A BREW?

COMMUNITY  
FUELLED

GOOD  
FOOD  
GOOD  
MOOD

GIVE IT SOME  
(COFFEE) BEANS



## Beechwood Community Centre

This community centre is a place for everyone and has been newly modernised and is wheelchair friendly. Check out the community garden or the Poolside Café, where there is a children's play space. Sit back and enjoy something from the menu, whether it is a spot of breakfast, freshly made sandwiches or a burger. There is something for everyone.

Café Opening Times

**Monday-Friday: 09:00 - 14:00, 16:00 - 18:00**

**Saturday-Sunday: 09:00 - 14:00**

**Beechwood Avenue, Runcorn, WA7 3HB**

**[beechwoodcentre.co.uk](http://beechwoodcentre.co.uk)**



## Castlefields Community Café and Upton Community Café

Both cafés are run by Halton Borough Council and based in the heart of the community. Not only can you enjoy a friendly service with a smile, but also a warm welcoming space, where you can have a natter over a brew to help tackle social isolation. There is a varied menu; from full English breakfasts, light lunches, snacks and refreshments, all at an affordable cost. Upton café also offers gluten free options.

There is also a wide range of events and activities that are worth checking out – you can find all the information on the website

**[www.haltoncommunitycentres.co.uk](http://www.haltoncommunitycentres.co.uk)**

Café Opening Times

**Monday - Friday: 09:00-13:00**

**Castlefields Community Centre, Village Square, Castlefields, Runcorn, WA7 2ST**

**Upton Community Centre, Hough Green Road, Hough Green, Widnes, WA8 4PF**



## Quigleys Community Café

Quigleys Community Café is run by James Quigley with the ambition to provide a welcome space for all. For friends to meet to help in tackling loneliness and providing a full menu of delicious low cost food and drink. With free Wi-Fi as well as a range of activities on offer such as art and dance classes, plus so much more. You can see why this is a bustling and friendly café. All are welcome, so come in and enjoy a great coffee served with a smile.

Café Opening Times

**Monday - Friday: 09:00-14:00**

**Quigleys Community Café, Grangeway Community Centre, Grangeway, Runcorn, WA7 5HA**

**[www.haltoncommunitycentres.co.uk](http://www.haltoncommunitycentres.co.uk)**

## Change Grow Live: Kitchen Table Café

As you walk into the café you can tell something special is happening. A low hum of laughter and chatter builds, amid a smell of home-cooked food. Every table is full of people eating, laughing and talking. Change Grow Live staff members and volunteers sit together with people who use the services and those in recovery, family members and people from the local community, all sharing stories and ideas. Tony Clarke is the heart and soul of the Kitchen Table Café. Along with Service Manager Charlotte Roberts, his perseverance and dedication has ensured the café is the focal point of recovery in Halton. Friday Lunch club Every Friday, the café serves a three-course meal, where people can pay as much or as little as they wish or can afford.

Café Opening Times

**Tuesday-Friday: 09:00 - 14:00**

**Aston Dane House, Waterloo Rd, Widnes, WA8 0QR**

**[changegrowlive.org](http://changegrowlive.org)**



## Widnes Market

Widnes Market has stood at the heart of the Halton community for more than 150 years. As well as being a great place to shop, it's a cornerstone of the community.

The market has a rich history and a vibrant atmosphere making it the perfect place to meet friends, eat and shop.

Market Opening Times

**Monday, Wednesday-Saturday: 09:00 - 16:30**

**Sunday, Tuesday: CLOSED**

**Bradley Way, Widnes, WA8 6UE**

**[widnesmarket.com](http://widnesmarket.com)**



# FEEL GOOD FOOD

**We all want to feel like we are making better choices, especially with our food, whether it is looking at healthier options, sustainable produce to reduce your carbon footprint or choosing an eatery which has a positive impact on the community. All these factors dish up a serving of good-mood food, that makes it taste even better.**

From cafés embracing new and innovative farming methods, powered by renewable energy, to growing methods that avoid the use of chemicals and pesticides, to reducing the carbon footprint of produce, Halton has them all. The feel-good food in Halton is best enjoyed with a serving of wide-open spaces and nature.

What better way to enjoy all this healthy, delicious food, than to get out and about in the borough? We've got Green Flag parks, Trans-Pennine Trails, waterways and cycle paths to get around the region. There are 106 cycle routes and the green belt covers approximately one-third of the land in the borough. If you're a fan of open spaces to explore, we have 10 local nature reserves, 47 local wildlife sites and 3 parks with Green Flag status, so there are plenty of ways to get out and about in Liverpool's rural hinterland to keep you feeling good for longer.

## PAIRS WELL WITH...

After another perfect pairing? We've chosen some of Halton's best offerings, which go perfectly with our Feel Good Food picks...

**1** Artisan ice cream is best enjoyed with a walk along the many pathways, cycleways and bridleways in the area.

**2** Homemade cakes and bakes made with homegrown produce is the perfect fuel before an adrenaline filled activity such as hitting the dry slope or ice skating.

**3** Eat your greens and then get out in the Green Flag Award winning parks found in Halton.

GOOD  
FOOD  
GOOD  
MOOD

COMMUNITY  
FUELLED

## HEATH CAFÉ

*The Heath Business and Technical Park, Heath Rd,  
Weston, Runcorn WA7 4QX*

Heath Café is a unique addition, as it is located in a business park. Heath Park is committed to community well-being and creating a sustainable and net zero environment for future generations.

From the friendly staff and high-quality service to the delicious daily specials, there are lots of reasons to return. Take advantage of the free Wi-Fi while you tuck into your breakfast or lunch.

If you are getting a takeaway, all refreshments are served in environmentally friendly containers which can either be reused, recycled or are compostable or biodegradable.

The community is at the very core of The Heath, with the popular **Eat @ The Heath Community Group meetings**. These are open to the over 50's and cost just £2 (monthly meetings are £3). They're a great way to socialise and make new friends. The weekly meetings are every Wednesday 11:30 - 13:30 and the monthly meeting is the last Wednesday of the month which includes a two course meal and entertainment. **Booking is required and pick up service is available for anyone without transport.**



### OPEN HOURS

Mon - Fri  
8:00 - 14:00

Breakfast from  
8:00 - 10:30

Lunch from  
11:30 - 14:00

Find out more  
[theheath.com/community](http://theheath.com/community)  
01928 5111 151

IN THE  
MOOD  
FOR  
FOOD

## THE WOODLANDS

*Liverpool Rd, Widnes WA8 7XU*

The Woodlands Bar & Grill is a family-run pub and restaurant serving fresh, home-cooked food in a warm and welcoming setting. With a spacious beer garden and a dedicated children's play area, it's the perfect feel-good spot to relax and spend the day with the whole family.

Regularly hosting family fun days, themed afternoons, and sportsman's evenings, The Woodlands offers something for everyone. From little ones enjoying the playground to adults catching up over great food and drinks. With a strong community feel and a packed calendar of events throughout the year, it's a local favourite for gathering, celebrating, and making memories with friends and family.

Find out more  
[thewoodlandswidnes.co.uk](http://thewoodlandswidnes.co.uk)  
0151 424 8480

FEEL  
GOOD  
FOOD

FAMILY  
FRIENDLY

NEW!

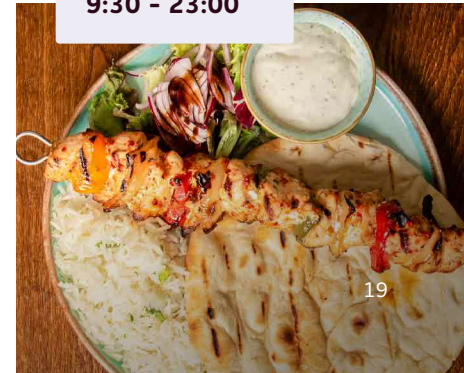
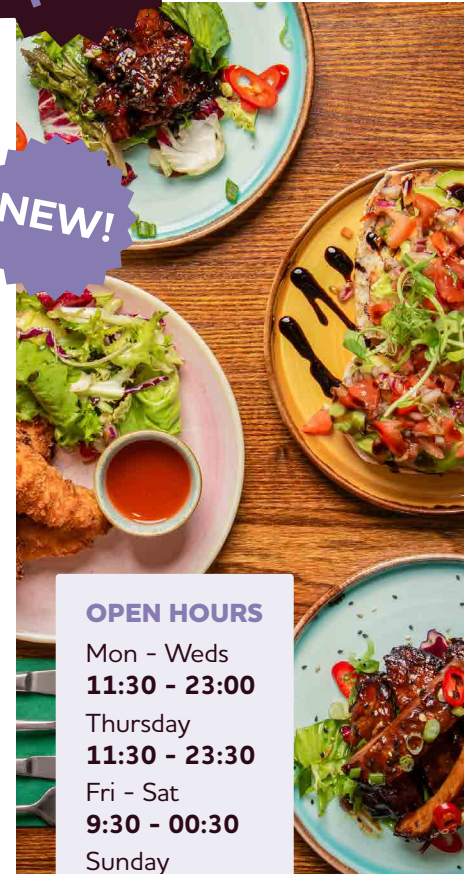
### OPEN HOURS

Mon - Weds  
11:30 - 23:00

Thursday  
11:30 - 23:30

Fri - Sat  
9:30 - 00:30

Sunday  
9:30 - 23:00





# FIELD 28

Chester Rd, Daresbury WA4 5LR

## An Interview with Jan Dobbs, owner of Field 28.

### What inspired you to start Field 28?

During COVID pandemic in 2020, restaurants were forced to close. The produce that was growing for restaurants and chefs would have been wasted unless we could find an outlet for it. We decided to start a veg box scheme that could be enjoyed by many local people, whilst avoiding waste.

When the world returned to normal a number of customers continued to enjoy the convenience of the veg box but for others, they preferred to return to a shopping experience, encouraging us to create a small farm shop for them to visit. With the addition of a deli kitchen and bakery, the field chefs use the fresh veg and salad to make deli items which are available in the shop and café.

### What kind of produce do you offer?

We continue to offer our veg boxes which showcase a journey of seasonal items grown at Field28. In addition to our fresh produce and English Flowers grown on the farm, the shop has a range of pantry items, fresh cheese, our own freshly

baked bread and pastries and recently the local Daresbury Ice cream. The Deli café @ Field28 offers a range of homemade items of both sweet and savoury, served with a selection of hot and cold drinks.

### So what makes Field 28 unique?

At Field 28, we take pride in using growing methods which always produce high-quality veg, salad micro greens and English flowers without the use of pesticides and biocides. We use a no-dig technique that allows us to ensure that the soil we grow in is improved with each year to preserve its goodness.

Once a month our doors remain open after hours for a Chef and Growers seed to plate dinner using the delicious produce that we grow. In addition to our supper clubs, we also host a series of events throughout the year - from growing experiences to fine dining.

**"Our Seed to Plate Supper Club, showcases the delicious produce that we grow."**



### What is something that makes you proud to part of Field 28?

We are proud that our diversity and determination to make Field 28 succeed provides employment for several talented team members and we are extremely grateful to the local people and neighbours who have become valuable customers and really seem to enjoy visiting.

### OPEN HOURS

Mon - Tues	Weds - Fri
10:00 - 16:00	10:00 - 17:00
Saturday	Sunday
10:00 - 16:00	10:00 - 16:00

Find out more  
[field28.com](https://field28.com)  
01925 740685

Prepare for your next adventure, see our blogs for plenty of inspiration:  
[visithalton.co.uk/plan-your-visit](https://visithalton.co.uk/plan-your-visit)



# DARESURY DAIRY

Penkridge Lake Farm, Newton Lane, Daresbury WA4 4HZ

## An Interview with Claire, Owner of Daresbury Dairy

**Can you tell us about Daresbury Dairy and the inspiration behind it?**

My husband's family have run a dairy farm in the beautiful setting of Daresbury for many generations. Having worked in a marketing role in the food and drink industry I was really inspired by quality, locally sourced ingredients and produce, but with zero experience in making ice cream I took a complete leap of faith to create the best quality ice cream. And armed with a plan and determination, we converted a calf shed into a manufacturing room. We carry the milk across the yard to be pasteurised and then to be made into our ice cream, which can be purchased here at the farm.

**What makes Daresbury Dairy ice cream different?**

Our beloved Friesian cows graze on the lush pastures and provide us with fresh milk. We only use the finest ingredients and where possible we use fresh fruit for our flavours, to retain the quality and integrity of our ice cream. At the shop we have a scoop cabinet with 19 flavours and around half of



### OPEN HOURS

Weds - Sun  
(+ Bank Hols)  
12:00 - 17:00

**"Each artisan batch of Multi Award Winning Daresbury Ice Cream is inspired by quality, locally sourced ingredients and produce."**

these flavours are best sellers that remain on the menu constantly. We change the rest with various specials. Many of our ice creams are gluten-free and we also make dairy-free sorbets too.

**How do you create new flavours for your ice cream?**

I am inspired by the seasons, sourcing fresh and readily available produce to be puréed. Because we create small artisan batches, we're able to adapt and create new flavours considering trends, customer requests and national occasions such as Hot Cross Bun flavour at Easter to Mince Pie or Cherry and Amaretto at Christmas.

Some of the more unusual requests include a delicious Lychee flavour to the more unusual Buckwheat flavour – that was an interesting process to get the balance of flavour right, but we did it.

**Are you open all-year-round?**

We are currently open Wednesday to Sunday and bank holidays. Customers can sit and enjoy ice cream from our scoop cabinet whilst sitting at our picnic benches overlooking the pond or purchase a pack to take home.

In winter months our opening hours do reduce (and we close in January) so it's always best to double check on our website.

Find out more  
[daresburydairy.co.uk](http://daresburydairy.co.uk)  
07856 091601

**Prepare for your next adventure, see our blogs for plenty of inspiration:**  
[visithalton.co.uk/plan-your-visit](http://visithalton.co.uk/plan-your-visit)

## HANDMADE IN HALTON

From splashes of spice to artisan bakes, meet the local legends turning tasty ideas into handcrafted delights. All made with love, flair and a whole lot of Halton spirit!

### HOWL AT THE MOON HOT SAUCE

Delicious, spicy hot sauce from Liverpool, made in small batches. Each batch has three types of chilli in it, lots of scotch bonnet, bullet chillies and bird's eye. These fiery blends pack a punch and brings bold flavour to everything from eggs to tacos.

Find out more at [hatmhotsauce.com](http://hatmhotsauce.com)

AS  
SEEN ON  
SOCIAL!

TURN UP  
THE HEAT!



SWEET  
AND  
NATURAL

### INCEY'S BEES

Sweet, golden goodness straight from the hive. Incey's Bees honey is made in small batches by happy bees in Widnes, with zero fuss and maximum flavour. Pure, raw, and totally delicious. Nature's best, just how the bees intended.

Find out more on Instagram @inceysbees



AS  
SEEN ON  
SOCIAL!

### TEA REEF

Bold, bright brews blended in Widnes. Tea Reef uses real ingredients and zero junk to create seriously tasty loose-leaf tea. From chill-out herbals to get-up-and-go greens, there's a brew for every mood.

Find out more at [teareef.co.uk](http://teareef.co.uk)



AS  
SEEN ON  
SOCIAL!

FAMILY  
FUELLED

THAT'S  
THE  
TEA

## THERE'S NO TASTE LIKE HOME!

Make sure follow us @visithalton on Instagram and head to [visit-halton.co.uk](http://visit-halton.co.uk) to find more home-grown producers and tasty bites from around the Borough!

TREAT  
YOURSELF

## DISCOVER - THE - HIDDEN HISTORY OF HALTON



TAKE A STEP BACK IN TIME  
ON OUR SIX HERITAGE  
TRAILS AND FIND OUT MORE  
ABOUT THE BOROUGH'S  
RICH AND FASCINATING  
HISTORY AND HERITAGE



PICK UP YOUR COPY FROM A LOCAL  
LIBRARY OR COMMUNITY CENTRE OR VISIT  
[visithalton.co.uk/heritage-trails](http://visithalton.co.uk/heritage-trails)



# A CULINARY JOURNEY

**Halton is a part of Liverpool's City Region and has been connected to Liverpool docks since the 18th Century; this in turn had a significant impact on the development of the area which started the Chemical Revolution.**

The docks also brought flavours from around the world, with tea, coffee and spice merchants making their way into the area which influenced local food and tastes.

Runcorn boasts one of the oldest delis in the country, with the first shop opening in 1884, listed as a tea and coffee merchant, grocer and provisions dealer.

With new flavours came new beginnings, as families migrated to the area, bringing with them new foods and recipes. These have become a staple ingredient within Halton's food offerings, such as authentic Italian coffee from Tuscany to the smells and flavours of Thailand, you are transported to far-flung places with every bite.

As you take a culinary journey around the borough, take a trip through Halton's surprising and rich heritage which includes, giants, castles, saints and a chemical revolution... there is lots to be savoured.

## PAIRS WELL WITH...

After another perfect pairing? We've chosen some of Halton's best offerings for a Culinary Journey around the region...

**1** A feast of famous continental meats and cheeses is best served with a historical feast exploring a castle for stunning views.

**2** Sip on the authentic Italian coffee and then get a historical fix in the charming village of Hale with its thatched roofs and Childe of Hale statue.

**3** Taste faraway flavours and then take a moment to wander through Halton's very own Wonderland and learn the history of Lewis Carroll.

FEEL  
GOOD  
FOOD

# ESPOSITO'S

Victoria Park, Birchfield Road, Widnes WA8 7SU  
81 Highlands Road, Runcorn WA7 4PT

## An Interview with Danny, the owner of Esposito's.

### How did Esposito's start up?

We started with ice cream vans back in the 70's, when my Dad came over from Italy. I then joined him in the 90's and worked with him in the parks. We then evolved in 2015, when we got an opportunity to tender for an Ice Cream Parlour in Victoria Park. We were successful, and it was from then we began to evolve and branched out into coffee and our cafés. We won the tender for our Runcorn Hill Park café, followed by our Mill Dam Park, Kirkby location in 2021. We have now just opened our latest branch in Court Hey Park in Huyton in 2023.

### Is your gelato still as popular as it was in the 70's?

Yes! Our gelato is one of our best sellers. It's authentic Italian gelato, we import high-quality ingredients from Italy to make small batches, using all great ingredients for our flavours.

### Can you recommend any signature dishes or drinks that first-time visitors must try?

Definitely try our coffee if you like coffee, it's imported from Tuscany in Italy. We also have



PHOENIX  
PARK,  
RUNCORN  
LOCATION  
OPENING  
IN 2025!



Ice Cream

GOOD  
FOOD  
GOOD  
MOOD

HOT  
HOT  
HOT



COFFEE, TASTE,  
INDULGE



WELCOME

*"We import high-quality ingredients from Italy to make small batches of our gelato."*

homemade cakes which we sell using all great ingredients. I'd of course try our gelato too. If you're still hungry, or looking for something more filling, I'd recommend our toasted Artisan Sandwiches made on Italian bread. We have some delicious flavours made with high-quality butchers' meats and cheeses - we also have vegetarian options too.

### What makes you unique compared to others in the area?

We are English-Italian, so there is an Italian feel to it with the coffee, gelato, and bread. But we have English-style cakes which we make that go down well. We bring the best of Italian and the best of English together, I think that's what makes us unique!

### OPEN HOURS

Monday - Sunday 9:00 - 17:00

Find out more  
[espositosicecream.co.uk](https://espositosicecream.co.uk)  
0333 015 1580

Prepare for your next adventure, see  
our blogs for plenty of inspiration:  
[visithalton.co.uk/plan-your-visit](https://visithalton.co.uk/plan-your-visit)

LOCAL  
FAVOURITE

GOOD  
FOOD  
GOOD  
MOOD

KEEPING IT IN  
THE FAMILY

DELISH!

# MONKS DELI

2 Granville Street Runcorn WA7 1NE

**This family run deli has five generations of expertise. We sat down and spoke with Richard, the owner of Monks Deli.**

## So how did Monks Deli start?

Monks Deli is a family-run delicatessen spanning five generations. Our first shop opened its doors in Runcorn, just a stone's throw from the banks of the River Mersey in 1884, making us one of the oldest delis in the country!

## Out of everything that you serve up at Monks, what do you find is the most popular?

Lunchtime is always very busy. As well as our fantastic selection of pies and pastries we also offer an unparalleled selection of lunchtime offerings from our sandwich and salad bar. All our salad is prepared fresh every day and all our meats and cheeses are cut to order. You won't find a fresher or higher quality lunch in town. We don't believe in the 'pre-packed sandwich'.

At Monks Deli all our sandwiches are made fresh to order while you watch, which means you can have exactly what you want! In terms of individual products Johnson's meat pies are definitely our most popular. People in this town grew up on them and they're still made to the same great recipe.



## What do you think has allowed Monks Deli to be a success over so many years?

We may have moved around the town to multiple different shops over the last 140 years, but we're still the same family serving fine food with a side of old-school customer service.

None of the above would have been possible without the good people of Runcorn, who have shopped with us for five generations!

## What is it that makes Monks Deli so unique?

We're an award-winning delicatessen specialising in the finest produce. From Cheshire pork sausages to local honey, we love to provide our customers with not only the best of British but the best that Cheshire has to offer. We also pride ourselves on our unrivalled offering of continental classics such as German cured meats, French cheeses, authentic Italian pasta and much more.

**"We love to provide our customers with not only the best of British but the best that Cheshire has to offer."**

## OPEN HOURS

Tues - Weds 7:30 - 14:00	Thurs - Fri 7:30 - 15:00
Saturday 7:30 - 14:00	Sun - Mon Closed

Find out more  
[monksdeli.co.uk](http://monksdeli.co.uk)  
01928 580086

**Prepare for your next adventure, see our blogs for plenty of inspiration:**  
[visithalton.co.uk/plan-your-visit](http://visithalton.co.uk/plan-your-visit)

**FAMILY  
FUELLED**

**HOT  
HOT  
HOT**

# EM'S COOKHOUSE

140 Birchfield Rd, Widnes WA8 9ED

**Serving up her favourite Thai food.  
Here's our Interview with Emily, the  
owner of Em's Cookhouse.**

***Can you share the journey behind Em's Cookhouse?***

Em's Cookhouse has been a dream in the making since 2018, but I was young with a love for travel, which meant putting that dream on hold. However, with the challenges brought by the Covid pandemic and feeling dissatisfied with my job, I decided it was time to take the leap and make my dream a reality.

Together with my partner, while juggling full-time jobs, we dedicated our weeknights and weekends to renovating a caravan, a process that took about a year and a half.

***What sets the flavours of your food apart in Halton?***

Our food stands out from what is currently available in Halton. At Em's Cookhouse, everything is cooked fresh to order, with all sauces and spring rolls crafted in-house. Our menu introduces flavours that may be unfamiliar to many, particularly Thai cuisine. I have loved introducing dishes that are so foreign to many people and watching them fall in love with Thai food and even become regulars!



## OPEN HOURS

Weds - Thurs  
**13:00 - 18:00**

Fri - Sat  
**13:00 - 19:00**



**TASTY!**

**BUT FIRST...  
FOOD**

***"I love introducing dishes that are so  
foreign to many people and watching  
them fall in love with Thai food!"***

***How do you approach sustainability?***

We reduce our environmental footprint by exploring composting options for the minimal food/veg waste generated during prep. Most of our takeout packaging and cutlery are recyclable too, aligning with our commitment to environmental consciousness.

***Do you ever host or take part in any  
special events?***

We're located in Widnes, but we're available for private events, weddings, festivals. We also operate at local & private events outside of Widnes, such as, Lymm Historic Transport Day, Glazefest and the All-Girls Rugby League festival at Halton Hornets.

Find out more on Instagram @[ems.cookhouse](https://www.instagram.com/ems.cookhouse)

**Prepare for your next adventure, see  
our blogs for plenty of inspiration:  
[visithalton.co.uk/plan-your-visit](https://www.visithalton.co.uk/plan-your-visit)**

# SCHOLARS RESTAURANT

Riverside College, Kingsway, Widnes WA8 7QQ

Head to the exclusive Scholars Training Restaurant at Riverside College for a culinary experience not to be missed. With silver service and gourmet food inspired by dishes from around the world you will not be disappointed – and all without the expensive price tag.

Food is exquisitely prepared and served by talented, Centre of Excellence in Catering & Hospitality students who are trained to first class standards by expert lecturers.

Alumni students include Connor Slater, who at twenty-three years old was promoted to Head Chef at Michelin Star Restaurant Mana in Manchester. Scholars Restaurant not only gives students like Connor the opportunity to experiment and try out new styles to inspire their future career, whilst allowing the public to get a taster of things to come.

Find out more  
[riversidecollege.ac.uk/scholars](http://riversidecollege.ac.uk/scholars)  
 0151 257 2015

IN THE MOOD  
FOR FOOD

FEEL  
GOOD  
FOOD



## OPEN HOURS

Tues, Thurs, Fri  
 12:00 - 13:00  
 (Term-Time Only)

GRAB LIFE BY  
THE FORK

WINNER  
★  
OUTSTANDING  
CUSTOMER  
SERVICE AWARD  
HALTON BUSINESS  
AWARDS

# DEADMAN INK TATTOO CAFÉ

100 Heath Rd S, Weston, Runcorn WA7 4RR

You have to check out the ink-redibly unusual pairing of a tattoo studio and bistro café. Whether you are in the market for a tattoo, or a cup of 100% organic coffee, this is the place to be.

With a menu of locally sourced produce, including their famous all-day breakfast of local sausage and bacon, haggis style black pudding, homemade hash browns, free range eggs, tomatoes, beans, mushrooms and Dr Dough toasted Sourdough, you work up an appetite just reading the ingredients. Check out the Deadman Benedict's Menu which gives a choice of 8 different Egg Benedicts – all cooked fresh to order. Kids are covered too with the 'Little Dudes' Kids Menu and colouring activities for all children (with prizes to be won).

Looking for a healthy option, choose from the Granola & Yogurt pots, with a choice of fruits and coulis. In the mood for something else? Well you can use the menu as a guide to customise your order and if it is available in the kitchen, they will always try their best to make it for you!

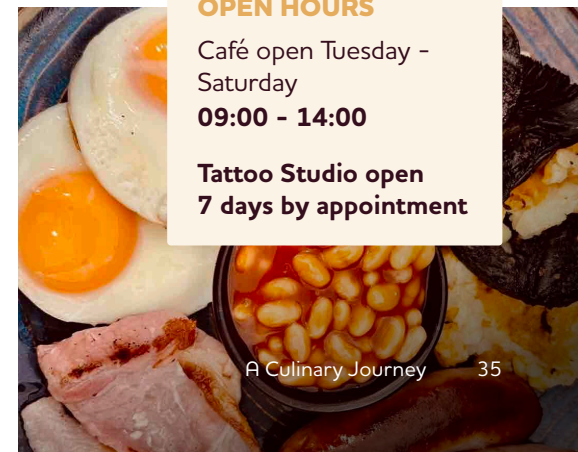
Fresh coffee and teas, wines, beers and spirits – and a small tattoo themed library, should you just want to sit and read a book with a latte and a biscuit. What's not to love?

Find out more  
[deadmanink.com](http://deadmanink.com)  
 07999 445555

## OPEN HOURS

Café open Tuesday - Saturday  
 09:00 - 14:00

Tattoo Studio open  
 7 days by appointment



**FEEL  
GOOD  
FOOD**

**COMMUNITY  
FUELLED**

## SOCIETY TAP ROOM

33 Ashridge St, Runcorn WA7 1HU

With craft beer, street food, cocktails and events; good times are on tap at this trendy off the beaten path tap room. Located in an old butchers, Society Ltd is a unique venue with plenty to offer.

Monthly events including comedy, DJs, and live music, means there really is something for everyone. A street food menu is available for eating in or takeaway, via [societyltd.co.uk](http://societyltd.co.uk). Keep up to date with opening times and events via social media.

Find out more  
[societyltd.co.uk](http://societyltd.co.uk)  
**01928 775628**

Image Credit: Lauren A Quayle:  
Front – The Shaws 1881  
mural and Behind the Pubs and  
Theatres mural by Liam Bononi



### PAIRS WELL WITH...

A wander through the area's vibrant street art and murals. What began as a spark of inspiration in Society Taprooms over five years ago has now exploded into a full-blown cultural landmark.

With the backdrop of the iconic Silver Jubilee Bridge the once ordinary viaduct pillars have been transformed into canvases of world-class street art, each mural a vibrant tribute to Runcorn's rich history and community spirit. Perfect for soaking up local flavour before or after a pint!

### OPEN HOURS

Thursday & Friday  
**16:00 - 22:30**

Saturday  
**12:00 - 22:30**

Sunday  
**15:00 - 22:30**

**HALE**

# EAT BIG IN THE HOME OF A GIANT

## EL VIENTO STEAK & TAPAS

**NEW!**

**TASTY!**

5 Ivy Farm Court, Hale L24 4AG

El Viento Steak & Tapas is a family-run restaurant nestled in the heart of Hale Village, where we've been proudly serving the community for years. Our mission is simple: to bring people together through quality food, heartfelt service, and a warm, welcoming atmosphere.

We specialise in premium Dry Aged Steaks sourced from Argentina and Brazil, known for their bold flavour and tenderness. Alongside our steaks, we offer a curated selection of modern Spanish and Catalan tapas, blending traditional flavours with contemporary presentation. All of our dishes are made with care and best enjoyed with a glass of our specially selected wines.

Our restaurant has become a gathering place for both locals and visitors. Many of our guests are now like family. People return not only for the food, but for the personal connection we build with them. El Viento is more than a place to eat; it's a place where memories are made. Fun fact: Our name "El Viento" (Spanish for "The Wind") symbolises movement, flavour, and the warm breeze of Mediterranean hospitality that inspires our food.

Find out more on Instagram  
[@elvientohalevillage](https://www.instagram.com/elvientohalevillage)

**BIG EATS**

**& SMALL  
PLATES**



**TREAT  
YOURSELF**

**IN THE MOOD  
FOR FOOD**

**TASTY!**

## SAN MARINO

138-142 Widnes Rd, Widnes WA8 6AX

Family run restaurant located in Widnes and Warrington. Cooking up traditional Italian food using only the freshest and highest quality ingredients, directly imported from Italy.

Open 16:00-22:00 Sun-Fri | 16:00-23:00 Sat  
Find out more [sanmarinorestaurant.com](http://sanmarinorestaurant.com)



**IN THE  
MOOD  
FOR  
FOOD**

**HOT  
HOT  
HOT**

**GOT SOMETHING**

**TASTY**

**TO TELL US ABOUT?**

**IF YOU KNOW OF ANYONE ELSE COOKING  
UP SOME SERIOUS DELIGHTS IN HALTON,  
LET US KNOW SO WE CAN SHARE AND  
MAKE SURE THEY'RE ON EVERYONE'S LIPS.**



**HEAD TO [VISITHALTON.CO.UK](http://VISITHALTON.CO.UK)  
AND FOLLOW US ON INSTAGRAM  
[@VISITHALTON](https://www.instagram.com/VISITHALTON) TO FIND MORE  
HOME-GROWN PRODUCERS AND  
TASTY BITES AROUND HALTON!**

**FEEL  
GOOD  
FOOD**

**HOT  
HOT  
HOT**



**GRAB A  
SLICE**

## TURN UP THE BASE

*The Lockdown Pub & Kitchen, 45 Canal St,  
Runcorn WA7 1SA*

We are a Neapolitan Style pizzeria based in The Lockdown Pub. We are local lads with a mission to bring the best and most authentic pizza we can to our hometown of Runcorn.

Open 16:30-22:00 Thurs-Fri,  
15:00-22:00 Saturday,  
15:00-20:00 Sunday

**YUMMMMMMMMM**

READ  
ALL  
ABOUT  
IT!

## HALTON HAPPENINGS

Looking for all the latest happenings in Halton? Look no further! Halton is a vibrant borough brimming with exciting activities and attractions that cater to every taste and interest. From breathtaking natural parks and scenic trails to thrilling activities and interactive museums, Halton offers a wealth of experiences that make it the perfect destination for everyone.

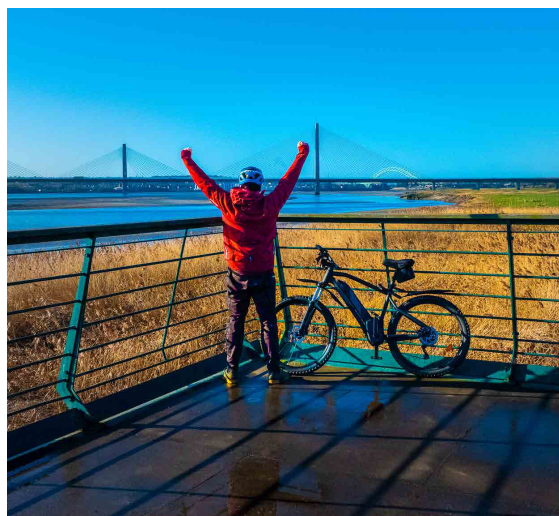
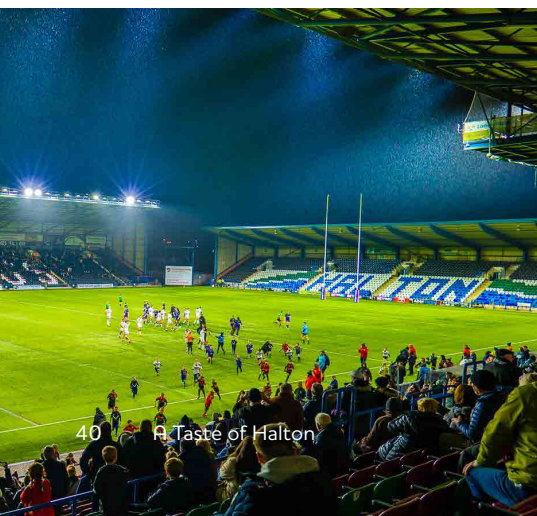
Food lovers will want a slice of Halton's diverse culinary scene, offering everything from cosy cafés and quaint country pubs to trendy artisan bars and those serving dishes from around the world. Wherever you decide to grab a bite,

you'll find something to suit every palate with each bite certain to tantalise your tastebuds.

Visit our website to plan your trip and discover the best of Halton today!  
[www.visithalton.co.uk](http://www.visithalton.co.uk)

WOW!

ONLY IN  
HALTON



# RE:WILD YOUR EXPERIENCE IN HALTON

HALTON HIGHLIGHTS  
ISSUE #4 IS OUT NOW!

PICK UP YOUR COPY  
FROM A LOCAL LIBRARY OR  
COMMUNITY CENTRE, PLANT  
IT, AND WATCH HALTON  
GROW GREENER TOGETHER!

DISCOVER  
THE BEST OF  
HALTON'S  
GREEN  
SPACES!

JUST CUT  
OUT AND  
PLANT



MADE  
FROM  
REAL  
SEEDS!

PLANT  
ME!

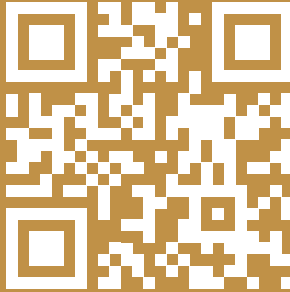
# SO MUCH MORE TO TASTE

Travel around the borough on a culinary journey, feed your curiosity and find out more about the surprising heritage...



- 1 Beechwood Community Centre**  
Beechwood Avenue, Runcorn, WA7 3HB
- 2 Brew Lane**  
170 Milton Road, Widnes, WA8 7JP
- 3 The Brooke Café @ Norton Priory**  
Tudor Road, Windmill Hill, WA7 1SX
- 4 Castlefields Community Café**  
Village Square, Castlefields, Runcorn. WA7 2ST
- 5 Catalyst Science Discovery Centre and Museum**  
Mersey Road, Widnes, WA8 0DF
- 6 Change Grow Live: Kitchen Table Café**  
Waterloo Road, Widnes, WA8 0QR
- 7 Coffee 500**  
St Michael's Industrial Estate, Widnes, WA8 8TL
- 8 Coffee Lab Runcorn**  
Victoria Road, Runcorn, WA7 5SS
- 9 Daresbury Dairy**  
Newton Lane, Daresbury, WA4 4HZ
- 10 Deadman Ink Tattoo Café**  
100 Heath Rd S, Weston, Runcorn WA7 4RR
- 11 El Viento Steak & Tapas Bar**  
5 Ivy Farm Court, Hale, L24 4AG
- 12 Em's Cookhouse**  
140 Birchfield Road, Widnes, WA8 9ED
- 13 Esposito's**  
81 Highlands Rd, Runcorn, WA7 4PT
- 14 Esposito's**  
Victoria Park, Birchfield Rd, Widnes, WA8 7SU
- 15 FM Caffè**  
55 Widnes Road, WA8 6AZ
- 16 Growing @ Field 28**  
Chester Road, Daresbury, WA4 5LR
- 17 Hale Village**  
Hale, Halton, L24 4AX
- 18 Halton Castle**  
Castle Road, Runcorn, WA7 2BE
- 19 Hazlehurst Studios**  
73A High Street, Runcorn, WA7 1AH
- 20 Heath Café**  
Heath Road, Runcorn, WA7 4QX
- 21 Honey Pot Café**  
Northwich Road, Runcorn, WA76PE
- 22 Lewis Carroll Centre**  
All Saints Church, Daresbury, WA4 4AE
- 23 Ma&Ja Café**  
21, Albert Square, Widnes WA8 6JW
- 24 Monks Delicatessen**  
2 Granville St, Runcorn, WA7 1NE
- 25 Patisserie Lane**  
82 Pit Ln, Widnes WA8 9HW
- 26 Planet Ice**  
Earle Road, Widnes, WA8 0TA
- 27 Quigleys Community Café**  
Grangeway, Runcorn, WA7 5HA
- 28 Runcorn Hill Park**  
Highland Road, Runcorn, WA7 4PT
- 29 Runcorn Ski Centre**  
Town Park, Stockham Lane, WA7 6PT
- 30 San Marino Restaurant**  
138-142 Widnes Rd, Widnes, WA8 6AX
- 31 Scholars Restaurant**  
Riverside College, Kingsway, Widnes, WA8 7QQ
- 32 Society Tap Room**  
33 Ashridge St, Runcorn, WA7 1HU
- 33 Space**  
50 Regent St, Runcorn, WA7 1LJ
- 34 The Terrace Café**  
The Brindley, High Street, Runcorn, WA7 1BG
- 35 Turn Up The Base**  
The Lockdown, 45 Canal St, Runcorn WA7 1SA
- 36 Victoria Park**  
Birchfield Rd, WA8 7SU
- 37 The Woodlands**  
Liverpool Rd, Widnes, WA8 7XU
- 38 Widnes Market**  
Bradley Way, Widnes, WA8 6UE

**SCAN HERE  
FOR MORE TASTES**



**VISITHALTON.CO.UK**

SHARE YOUR  
HALTON FOODIE STORIES...  
**stephanie.davies@halton.gov.uk**



**VISIT  
HALTON**